

FINAL PLANT LIST-ANDERSON RESIDENCE

BACK AND SIDEYARD

Symbol	Common Name	Qty/Size	Notes
	Crape Myrtle	1-5 or 15 gal.	"Dwarf Purple"- (See plan for details) per ALC approval (see attached)
	Italian Cypress	1-15 gal	
	Pineapple Guava	2-5 gal	
	"Littlejohn Bottlebrush	5-5 gal.	
	"Spanish Lavender	3-5 gal.	Use 1-1gph emitter
	Petite Pink Oleander	1-5 gal	Next to new Cypress
	Bulbine-Orange/yellow	3-1 gal.	
	Lily Turf	3-1 gal.	
	Star Jasmine	2 x 5 gal.	(On Posts of Shade Structure)

FRONTYARD

Euphorbia ridgida	2-5 gal
Penstemon	3-1 gal
Bulbine	3-1 gal.

TRANSPLANTS: (TR)

- 6-7 Cacti from back to frontyard
- 3 Purple Lantana from east side of front yard to West side of Drive
- 3-4 Agave from pots to front yard

REMOVALS: (R)

- 1 Med. Oleander; 1 Med. Euonymus; 1-5' Bottlebrush shrub; 4-5 small misc plants

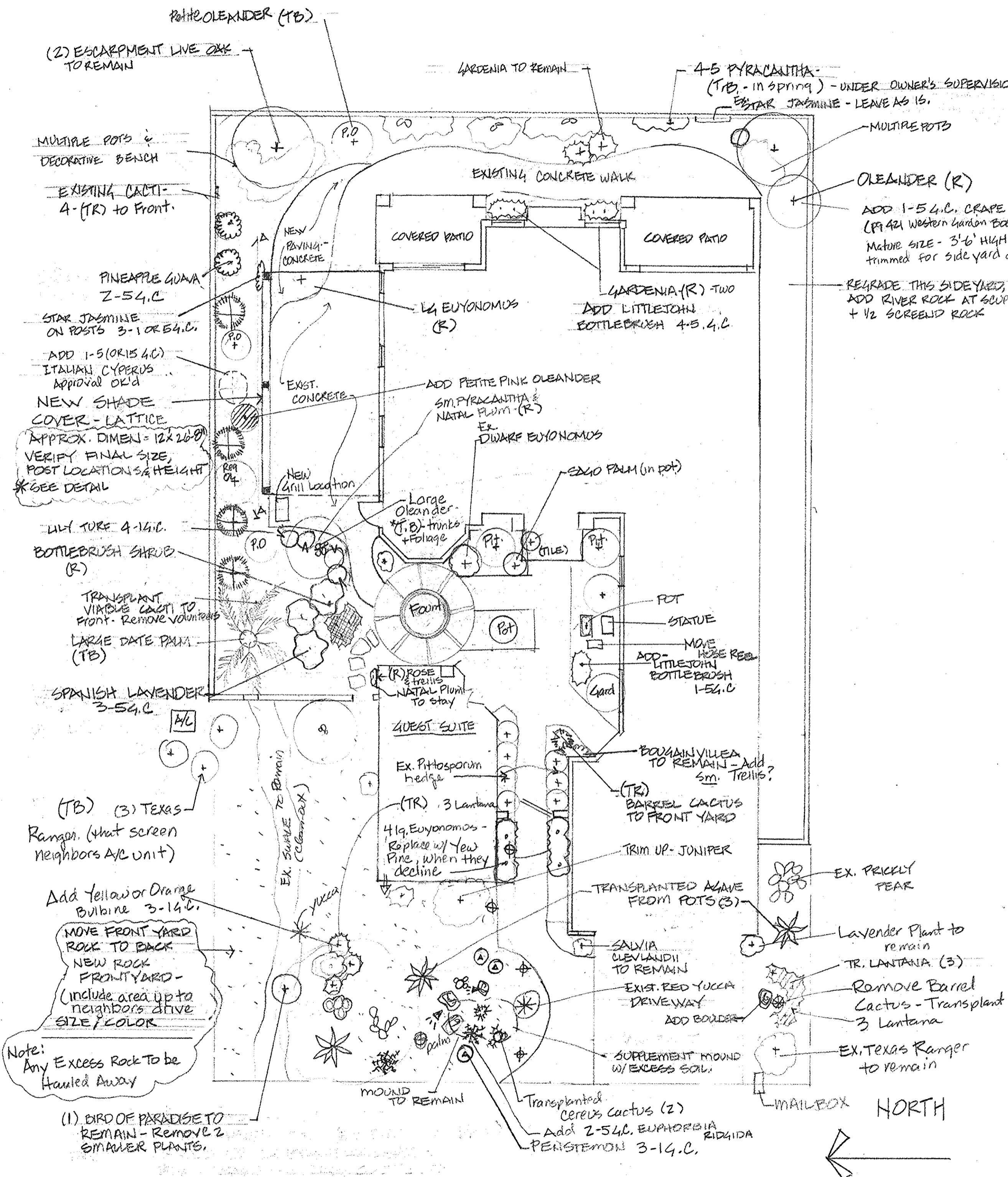
TRIMMING (TB)

Trees and shrubs requiring a general heading back-some need to be reduced in size/width due to access or clearing of new structure. See plan for other specific notes.

*Please see attached detail of new shade structure.

Per ALC Guidelines- no ALC permit is required for changing of plants within the rear or sideyard. Frontyard additions are all low, ground cover type or Desert landscaping.

Upgraded lighting for frontyard, includes 4 pathway lights and 2 up-lights on existing palm and cacti.



Landscape Renovations For
Karl & Glenda Anderson
64343 E. Idlewind ~ Saddlebrook
By Az Landshapes
FINAL 12/14/10